



# Medical Specialist Access Framework (MSAF)

A guide to Equitable Access to Specialist Care for  
Aboriginal and Torres Strait Islander people

**RACP  
CONGRESS  
2018**  
Sydney  
14 – 16 May 2018

[www.racpcongress.com.au](http://www.racpcongress.com.au)



# Welcome

I would like to show my respect and acknowledge the Gadigal people of the Eora Nation who are the traditional Owners and Custodians of the Land on which this meeting takes place, and their Elders past and present.

I extend that respect to other Aboriginal and Torres Strait Islander people who are present.



# Introductions

Dr Tamara Mackean (Chair)  
Dr Catherine Yelland PSM  
Professor Noel Hayman  
Professor Don Campbell  
Dr Simon Quilty

**RACP  
CONGRESS  
2018**  
Sydney  
14 – 16 May 2018

[www.racpcongress.com.au](http://www.racpcongress.com.au)



# RACP's Aboriginal and Torres Strait Islander Health Committee

Current members:

Dr Tamara Mackean (Chair)

Professor Noel Hayman (Deputy chair)

Ms Dawn Casey PSM (NACCHO representative)

Dr Angela Dos Santos

Dr Andrew Hutchinson

Associate Professor Mark Lane

Associate Professor Phillip Mills (Community representative)

Dr Jonathan Newchurch (AIDA representative)

Dr Naru Pal

Dr Simon Quilty

Dr Angela Titmuss

**RACP**  
**CONGRESS**  
**2018**  
Sydney  
14 – 16 May 2018

[www.racpcongress.com.au](http://www.racpcongress.com.au)



# RACP's Aboriginal and Torres Strait Islander Health Committee



**RACP  
CONGRESS  
2018**  
Sydney  
14 – 16 May 2018

[www.racpcongress.com.au](http://www.racpcongress.com.au)



## Past ATSIHC members + MSAF working party members

Dr Paul Bauert

Dr Mary Belfrage

Ms Lisa Briggs

Dr Alex Hope

Ms Ann Maree Liddy

Professor Ian Ring AO

Dr Catherine Yelland

Dr Ashim Sinha

Associate Professor John Stuart

Dr Stephanie Trust

Ms Michelle Underhill

Dr Ray Warner

Ms Catherine Wright



# Session plan

- Background
- What is the issue?
- What is the Framework?
- Quick tour of the website
- Presentations from Noel, Don, Simon, Catherine
- Conversation, questions and observations about the Framework
- Next steps



## What is the issue?

On per person basis, average health expenditure for Indigenous Australians in 2013–14 was **1.38 times** that for non-Indigenous Australians.

But...

Indigenous Australians are currently experiencing a burden of disease and illness **2.3 times** the rate of non-Indigenous Australians.

Source: Aboriginal and Torres Strait Islander Health Performance

Framework





## What is the issue?

Aboriginal and Torres Strait Islander peoples see specialists about **40 per cent less often** than non-Aboriginal Australians (despite greater burden of disease).

In addition, this *access discrepancy* between Aboriginal and non-Aboriginal access to specialists is worse than the discrepancy for access to GPs, allied health, pathology, diagnostic imaging, and other MBS items.

Source: Aboriginal and Torres Strait Islander Health Performance Framework



# Background to the MSAF



**RACP  
CONGRESS  
2018**  
Sydney  
14 – 16 May 2018

[www.racpcongress.com.au](http://www.racpcongress.com.au)



# Where does this fit strategically?



RACP  
CONGRESS  
2018  
Sydney  
14 - 16 May 2018

[www.racpcongress.com.au](http://www.racpcongress.com.au)

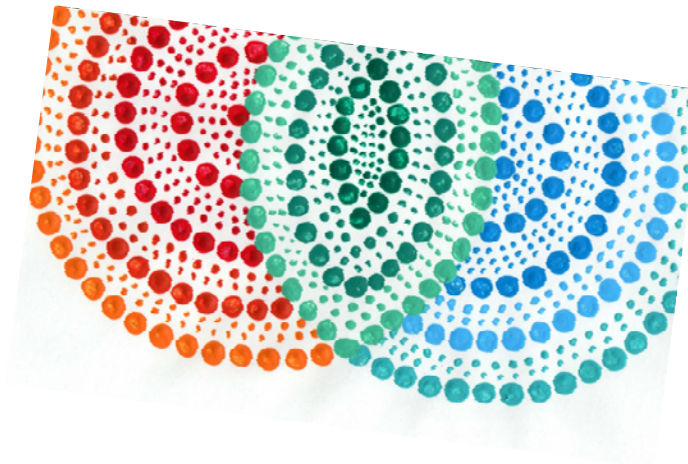


# Where does this fit strategically?

Actions	Deliverables by 2018	Deliverables by 2023	Lead entity
<p><b>Strategy 1B:</b> Mainstream health services are supported to provide clinically competent, culturally safe, accessible, accountable and responsive services to Aboriginal and Torres Strait Islander peoples in a health system that is free of racism and inequality.</p>			
<p>Guidance on the principles that inform equitable access to specialist medical care.</p>	<p>The development and usage of a national framework that drives improved access to specialist medical care and integration of care across the health sectors.</p>	<p>Review of national framework undertaken and recommendations actioned.</p>	<p>Royal Australasian College of Physicians (RACP), NHLF, NACCHO, Affiliates, ACCHOs, Health, health service providers</p>



# Deliverable by 2018



## Medical Specialist Access Framework

A guide to Equitable Access to Specialist Care for Aboriginal and Torres Strait Islander people



Specialist credit: Zachary Bennardbrook is the artist and owner of Saltwater Creations. A Torres Strait Islander artist born and raised in Weewong (Edinburgh Country), he has a love for the ocean and creating contemporary artworks which represent his culture and passions. Bennardbrook created an original artwork for the RACP Australian College of Physicians to represent both patients' community engagement. The red and orange concentric circles on the left symbolise the patient, their family and the health service and the local medical profession, college and university contexts. The blue concentric circles on the right symbolise the patient, green in the center depicts the engagement areas where all these individual and contextual elements can connect to promote health and wellbeing. [www.saltwatercreations.com](http://www.saltwatercreations.com)

RACP  
CONGRESS  
2018  
Sydney  
14 – 16 May 2018

[www.racpcongress.com.au](http://www.racpcongress.com.au)



# MSAF

Three parts:

- Principles
- Roles and Responsibilities
- Enablers of specialist access

Then:

- Case studies
- Tools and resources



# Principles

- Indigenous Leadership
- Culturally safe and equitable services
- Person centred and family oriented
- Flexibility
- Sustainable and feasible
- Integration and continuity of care
- Quality and accountability



# Why a principles-based framework?

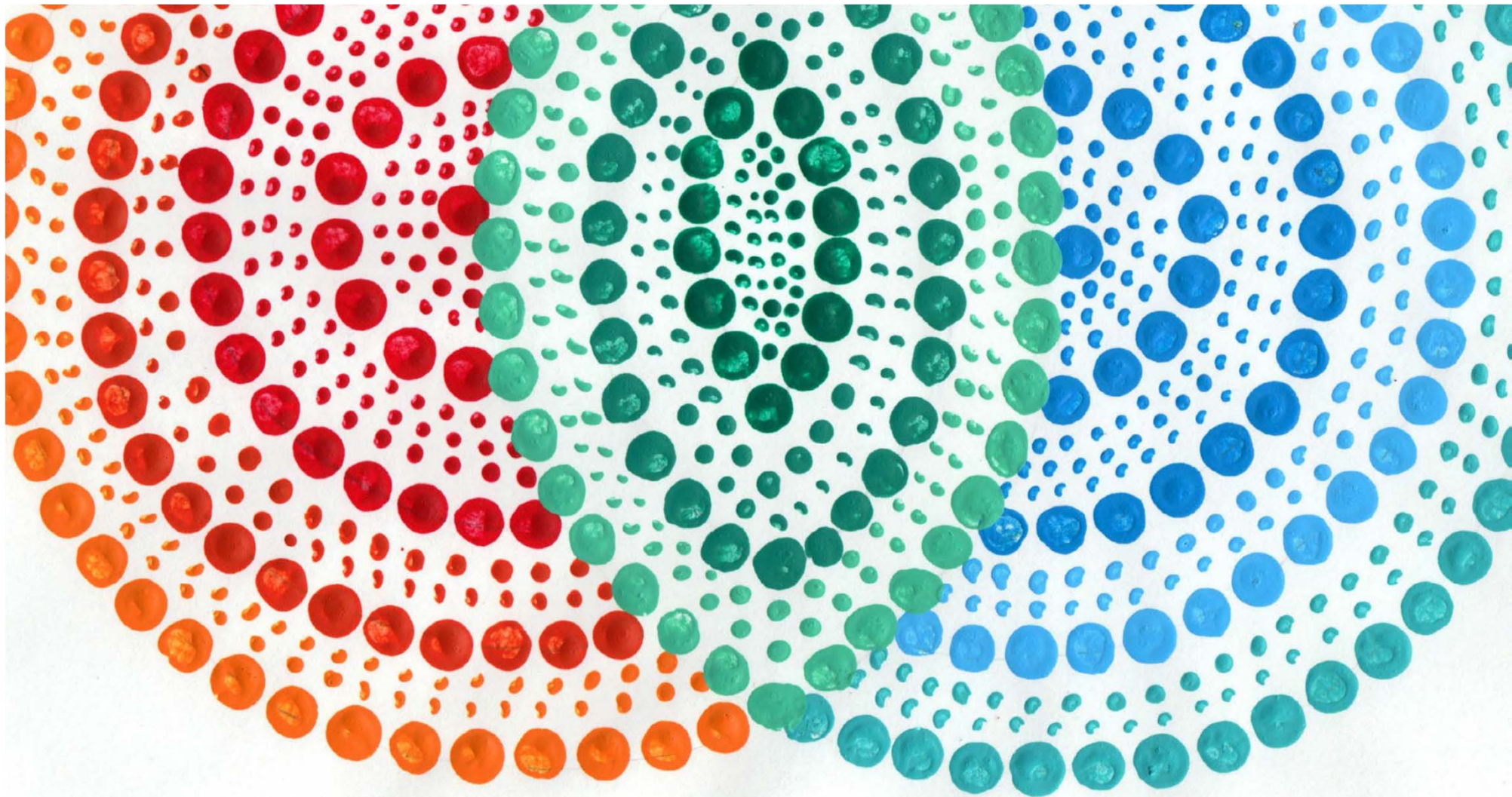
Because ATSIHC want a strengths-based approach, not a deficit lens through which to view the challenge.

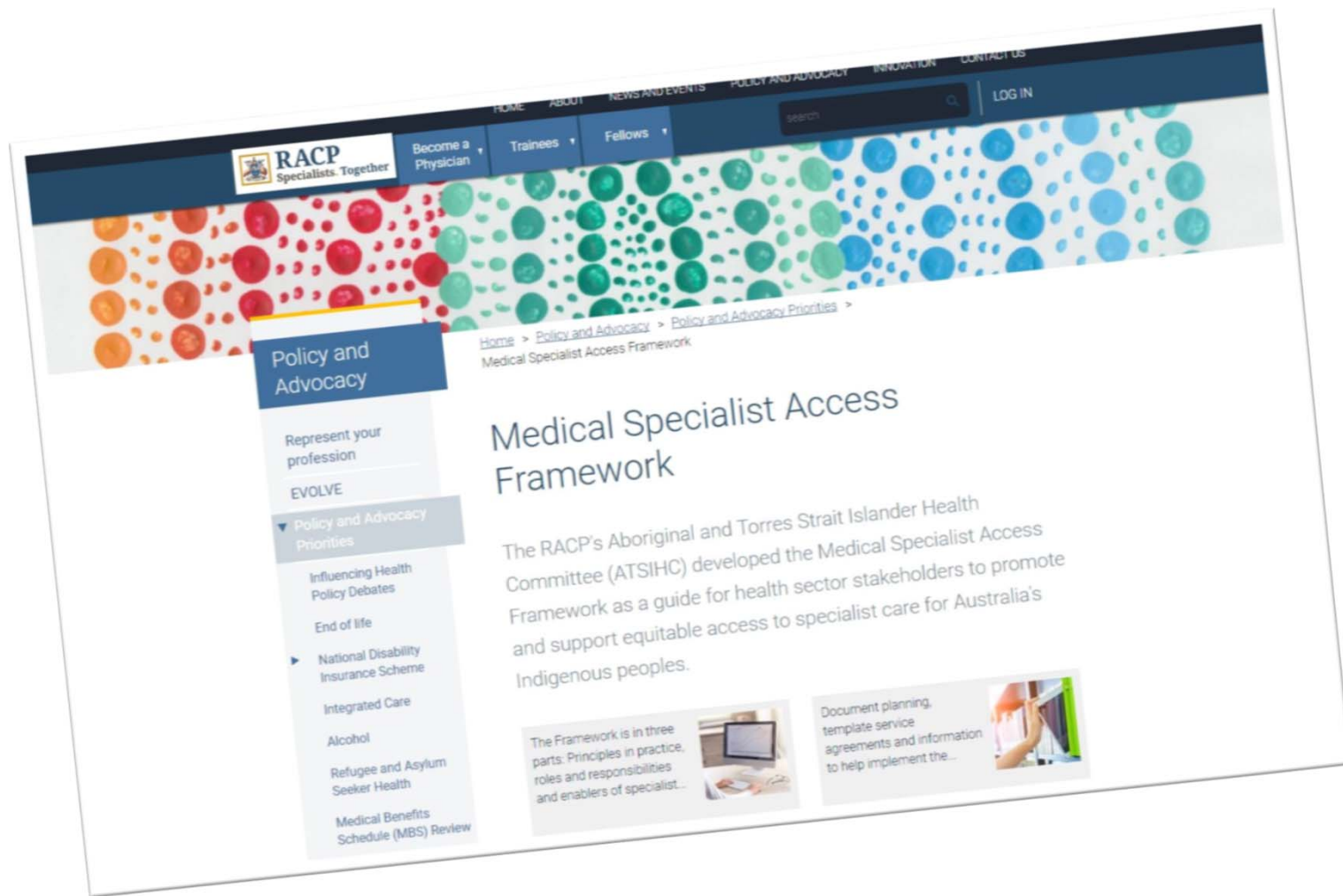




# Role of case studies

- The case studies exemplify the principles in different combinations
- They are instructive and potentially replicable, but they are not a recipe book.





Policy and  
Advocacy

Represent your  
profession

EVOLVE

Policy and Advocacy  
Priorities

Influencing Health  
Policy Debates

End of life

National Disability  
Insurance Scheme

Integrated Care

Alcohol

Refugee and Asylum  
Seeker Health

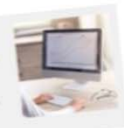
Medical Benefits  
Schedule (MBS) Review

Home > Policy and Advocacy > Policy and Advocacy Priorities >  
Medical Specialist Access Framework

## Medical Specialist Access Framework

The RACP's Aboriginal and Torres Strait Islander Health Committee (ATSIHC) developed the Medical Specialist Access Framework as a guide for health sector stakeholders to promote and support equitable access to specialist care for Australia's Indigenous peoples.

The Framework is in three parts: Principles in practice, roles and responsibilities and enablers of specialist...



Document planning, template service agreements and information to help implement the...



[www.racp.edu.au/msaf](http://www.racp.edu.au/msaf)



# Four physicians' experiences

- Noel Hayman
- Don Campbell
- Simon Quilty
- Catherine Yelland